



What: Resilient Georgia General Meeting
When: December 10, 2020 from 11:00 - 12:30
Who: 145 Resilient Georgia Partners and Stakeholders
What: Questions and Answers and Resources Shared in Zoom Chat

Questions and Answers Discussed During 12/10 Meeting Zoom Chat

Athens Northeast Georgia

What is the name of the Georgia State University Social Work Professor focusing on traumatic stress?

- [Dr. Brian Bride](#), Professor and Director of the School of Social Work at Georgia State University
- Dr. Bride is the developer of the Secondary Traumatic Stress Scale and has received a number of honors as a result of his research on secondary traumatic stress, including the Creative Research Medal from the University of Georgia, and had an article identified in the British Journal of Social Work as the sixth most influential social work article in the prior decade.

Do you partner with any local domestic violence programs in your area?

- Not active partnerships yet

For any additional queries please contact –

Sarah H. McKinney, President/CEO Athens Area Community Foundation, smckinney@athensareacf.org

Augusta

Has there been any news coverage or is there a written report on the Resilient Teens program?

- [Resilient Teens website.](#)
- [MCG students host “Teen Resiliency” program](#), WJBF News, May 20, 2020
- [Resilient Teens Learn New Skills to Manage Stress of Isolation](#), The Millen News, June 16, 2020

Are the medical student facilitators pursuing psychiatry or general medicine degrees?

- The Medical College of Georgia medical students participating in Resilient Teens, interestingly, have all kinds of specialty practice interests.

What do you think most contributed to the attendance success?

- We have made a special effort to have med students reach out to the students throughout the program and we check in with them frequently. Plus, we think the teens are getting something meaningful out of the interaction.

Are there any plans for post survey evaluation?

- Yes, we have an evaluator who is working with us. We do weekly surveys and we have done a pre- and post-survey with both the teens and the facilitators. We will have a full report with our data findings in January.

Our mission at Resilient Georgia is to lead a state-wide coalition to develop a closely aligned trauma-informed public and private network working toward a united vision to create a birth through 26 year-old integrated behavioral health system. This includes the use of essential tools such as education/teaching/training, workforce development, policy strengthening, practice research, and evaluation.



Do you partner with any local domestic violence programs in your area?

- Currently partnering with Safe Homes & Child Enrichment

For any additional queries please contact –

Dr. Kim Loomer, PhD, Associate Dean, Associate Professor, Psychiatry & Health Behavior, kloomer@augusta.edu

Coastal Georgia (Savannah)

Do you partner with your local domestic violence programs in your area?

- We partner with Rape Crisis Center of the Coastal Empire and we also work with CASA and their advocates. We facilitated training for these organizations and helped develop mindfulness and self-compassion practitioners. We are also working with CASA on developing a "stress-relief zone" in their office building which they share with our local DFCS.
- We share resources with the Safe Shelter and their staff took advantage of several training opportunities that we promoted and or offered.

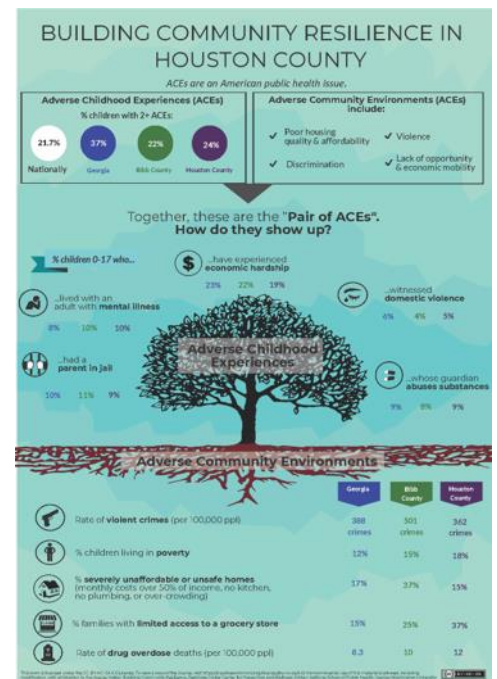
For any additional queries please contact –

Lizann Roberts, Executive Director, Coastal Georgia Indicators Coalition, director.cgic@gmail.com

Resilient Middle Georgia (Macon)

Who provides the 'Pair of ACEs: Building Community Resilience' training and resources?

- [Dr. Wendy Ellis](#), Assistant Professor in Global Health and the Director of the Center for Community Resilience, School of Public Health, George Washington University.
- The [Center for Community Resilience](#) seeks to improve the health of communities by enabling cross-sectoral partners to align policy, program and practice to address adverse childhood experiences in the context of adverse community environments-- or as Dr. Ellis has coined it "[The Pair of ACEs](#)". Using the Pair of ACEs framing, [Building Community Resilience](#) (BCR) networks have successfully led systems and policy change focused on addressing long-standing economic, social and health disparities by partnering with community, integrating service delivery and building political will for change.
- Based on information and templates from the BCR collaborative, Resilient Middle Georgia has developed "Pair of ACEs": Adverse Childhood Experiences (ACEs) and Adverse Community Environments (ACES) infographics specific to each of their 14 counties to represent local data and compare it with the state (see sample picture).



Our mission at Resilient Georgia is to lead a state-wide coalition to develop a closely aligned trauma-informed public and private network working toward a united vision to create a birth through 26 year-old integrated behavioral health system. This includes the use of essential tools such as education/teaching/training, workforce development, policy strengthening, practice research, and evaluation.



Where can we access Neighbor Check In cards?

- The physically distancing social calling cards can be downloaded from the [‘Resources’ webpage](#) (scroll to bottom of the page) on the Resilient Middle Georgia website

Do you partner with any local domestic violence programs in your area?

- Crisis Line and Safe House is part of our coalition along with Crescent House, Navicent Health

For any additional queries please contact –

Dr. Andrea S. Meyer Stinson, Ph.D. LMFT CFLE, Associate Professor of Psychiatry & Behavioral Sciences and Associate Professor of Pediatrics, Mercer University School of Medicine, meyer_as@mercer.edu

Chattahoochee Valley (Columbus)

Do you partner with any local domestic violence programs in your area?

- Currently in discussions with Hope Harbor

For any additional queries please contact –

Sidney Houck, Project Coordinator, Resilient Chattahoochee Valley Child Equity Collaborative, SHouck@unitedwayofthecv.org

Rome-Floyd

Do you partner with any local domestic violence programs in your area?

- Currently partnering with Our House Battered Women’s Shelter in Polk county
- In Bartow county, we have a great working relationship with our local Christian League for Battered Women's shelter. Lately, we have been working together on workforce development with their clients and we are collaborating on some other projects as well.

For any additional queries please contact –

Doug Belisle, Executive Director, Bartow Collaborative, bartowcollaborative@gmail.com

United Way of Southwest Georgia (Albany)

Do you partner with any local domestic violence programs in your area?

- Currently partnering with Liberty House

For any additional queries please contact –

Ashley Williams, Special Projects and Administration Manager, specialprojects@unitedwayswga.org

Resilient SWGA (Thomasville)

What is the source of the training Elijah received?

- Elijah received Connections Matter training.

Our mission at Resilient Georgia is to lead a state-wide coalition to develop a closely aligned trauma-informed public and private network working toward a united vision to create a birth through 26 year-old integrated behavioral health system. This includes the use of essential tools such as education/teaching/training, workforce development, policy strengthening, practice research, and evaluation.



- The [Connections Matter Georgia Initiative](#) is a collaboration between the Georgia Center for Child Advocacy and Prevent Child Abuse Georgia focused on effectively educating communities about Adverse Childhood Experiences (ACEs), trauma, and resiliency.
- The Connections Matter Workshop is an interactive discussion-based program that can be taken in either two days (2 hours each day) OR one day (4 hours) via virtual Zoom format.
- If anyone is interested in the Connections Matter training, please visit the [Georgia Center for Child Advocacy](#) website.

Do you partner with any local domestic violence programs in your area?

- No active partnerships currently – we are working on it

For any additional queries please contact –

Elijah Miranda, Executive Director, Vashti Center, ElijahM@vashti.org

Alex English, Community Training Coordinator, Vashti Center, AlexE@vashti.org

Additional Resources Shared During 12/10 General Meeting Zoom Chat

1. [12 Myths of the Science of ACEs](#)

- Shared by Carey Sipp, Southeastern Regional Community Facilitator, ACEs Connection Network, csipp@acesconnection
- This article also contains an infographic depicting “The 3 Realms of ACEs Science”

2. [Community Resiliency Model](#)

- Shared by Dr. Linda Grabbe, Assistant Clinical Professor, School of Nursing, Emory University, Family Nurse Practitioner & Psychiatric/Mental Health Nurse Practitioner and Certified Community Resiliency Model Trainer, lgrabbe@emory.edu
- The Georgia Nurses Association is facilitating Community Resiliency Model trainings and workshops currently and the trainings are open to the general public. They can accommodate an unlimited number of attendees in the 1-hour introduction classes. To learn more about the model, please visit [CRM Georgia](#) and to sign up for the introductory training please visit [The Georgia Nurses Association website](#).

3. [Firearm Injury Surveillance Through Emergency Rooms \(FASTER\)](#)

- Shared by Rana Bayakly, Chief Epidemiologist, Chronic Disease at Georgia Department of Public Health, rana.bayakly@dph.ga.gov
- CDC’s Division of Violence Prevention is funding the Georgia Department of Public Health as part of a competitively funded initiative to provide surveillance data in near-real time on emergency visits for nonfatal firearm injuries.

Our mission at Resilient Georgia is to lead a state-wide coalition to develop a closely aligned trauma-informed public and private network working toward a united vision to create a birth through 26 year-old integrated behavioral health system. This includes the use of essential tools such as education/teaching/training, workforce development, policy strengthening, practice research, and evaluation.



4. [Georgia ACEs Connection](#)
 - Shared by Carey Sipp, Southeastern Regional Community Facilitator, ACEs Connection Network, csipp@acesconnection
 - If anyone is not yet a member of ACEs Connection, please email Carey and she will send you an invitation to Georgia ACEs Connection, and you will automatically become a member of ACEs Connection as well for free.
 - Please post any ACEs related content on Georgia ACEs Connection, and please email Carey with any ideas, questions, concerns or links to any newspaper stories about ACEs-related work in Georgia so she can share it with other Southeastern states.

5. [Georgia's Child Abuse and Neglect Prevention Plan](#)
 - Shared by Deborah Chosewood, Deputy Director of Prevention and Community Support Section, Georgia Division of Family and Children Services, Deborah.chosewood@dhs.ga.gov
 - If anyone would like to be involved in their regional Child Abuse and Neglect Prevention plans to be developed in 2021, please contact Deborah.

6. 'Handle with Care' [West Virginia Model](#) and [Maryland Model](#)
 - Shared by –
 - Dr. Linda Grabbe, Assistant Clinical Professor, School of Nursing, Emory University, Family Nurse Practitioner & Psychiatric/Mental Health Nurse Practitioner and Certified Community Resiliency Model Trainer, lgrabbe@emory.edu
 - Dr. Andrea Stinson, Ph.D. LMFT CFLE, Associate Professor of Psychiatry & Behavioral Sciences and Associate Professor of Pediatrics, Mercer University School of Medicine, meyer_as@mercer.edu
 - Tiffany Sawyer, Director of Prevention at The Georgia Center for Child Advocacy & President at The National Coalition to Prevent Child Sexual Abuse & Exploitation, TiffanyS@gacfca.org
 - Handle with Care is a trauma-informed collaboration between local law enforcement and schools.
 - Handle with Care has been adopted by the [Troup County School system](#) in Georgia, and is also being implemented by Augusta, Coastal Georgia and Resilient Middle Georgia regional coalitions.

7. [Resilient Middle Georgia Community Adversity ACEs by County Infographics](#)
 - Shared by Dr. Andrea S. Meyer Stinson, Ph.D. LMFT CFLE, Associate Professor of Psychiatry & Behavioral Sciences and Associate Professor of Pediatrics, Mercer University School of Medicine, meyer_as@mercer.edu
 - Using primarily Kids Count data, Resilient Middle Georgia has developed ACEs data infographics for each of the 14 counties in their coalition.

Our mission at Resilient Georgia is to lead a state-wide coalition to develop a closely aligned trauma-informed public and private network working toward a united vision to create a birth through 26 year-old integrated behavioral health system. This includes the use of essential tools such as education/teaching/training, workforce development, policy strengthening, practice research, and evaluation.



8. [Stewards of Children](#)

- Shared by Tiffany Sawyer, Director of Prevention at The Georgia Center for Child Advocacy & President at The National Coalition to Prevent Child Sexual Abuse & Exploitation, TiffanyS@gacfca.org
- The Stewards of Children training curriculum is the only adult-focused, evidence-informed curriculum proven to increase knowledge and attitudes about child sexual abuse and to change behaviors promoting protective factors. The one-time 2 ½ hour Stewards of Children program is available through a group session led by an authorized facilitator as well as online.
- If anyone is interested in the Stewards of Children training, please visit the [Georgia Center for Child Advocacy website](#)

Our mission at Resilient Georgia is to lead a state-wide coalition to develop a closely aligned trauma-informed public and private network working toward a united vision to create a birth through 26 year-old integrated behavioral health system. This includes the use of essential tools such as education/teaching/training, workforce development, policy strengthening, practice research, and evaluation.